



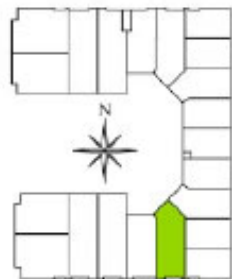
WESTROCK PROPERTY

604 929 9493

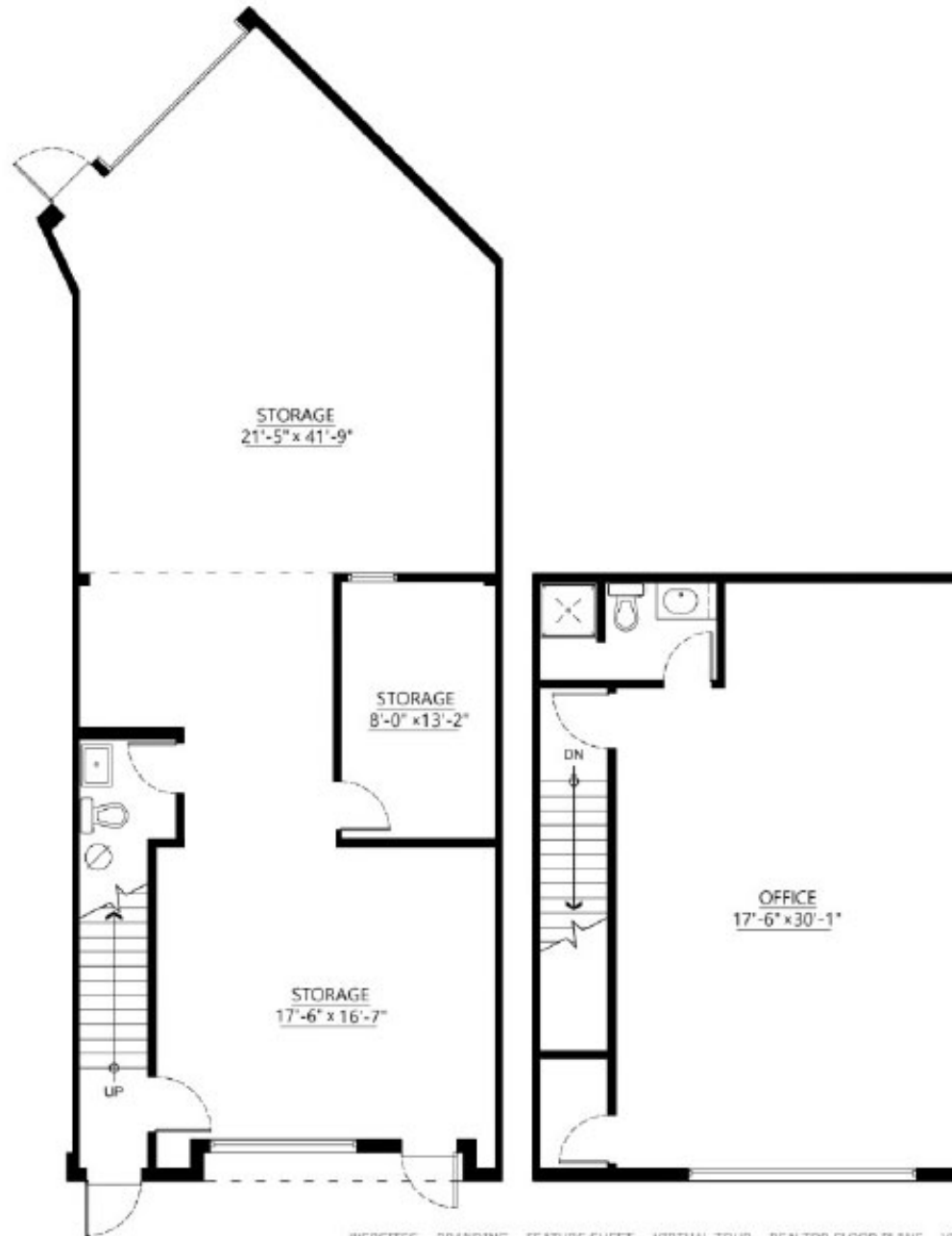
www.westrockproperty.com

**116 - 2799 Gilmore Ave,
Burnaby, B.C.**

Total : 1,883 sq.ft.



This floor plan is not intended for architectural/construction use.



[WEBSITES](#) [BRANDING](#) [FEATURE SHEET](#) [VIRTUAL TOUR](#) [REALTOR FLOOR PLANS](#) [VIDEO TOUR](#) [WWW.PIXILINK.COM](#)

Pixilink
SOLUTIONS
604-639-5434