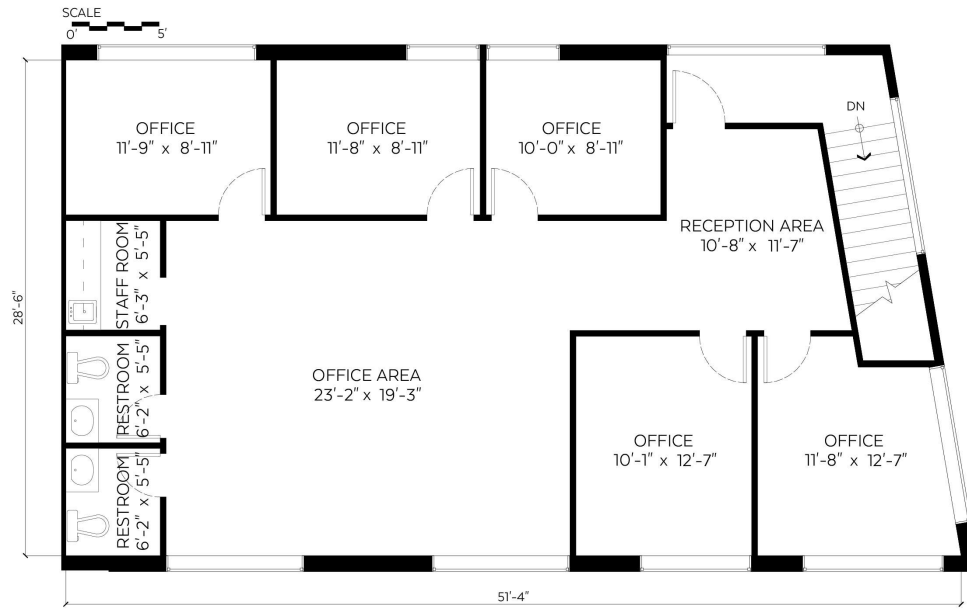
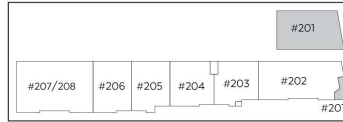
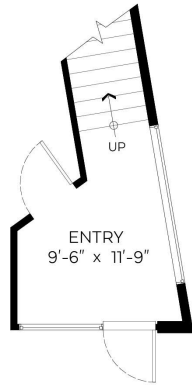




#201-2080 Hartley Avenue,
Coquitlam, B.C.

Total Sq.Ft. 1,581 sq.ft.



Second Level Plan

Floor Area: 1,513 sq.ft.

Ceiling Height: 9 ft.



Valid Until: March 12, 2025

This floor plan represents usable square footage and is not suitable for leasing. The floor plan is also not suitable for architectural/construction.
© Excelsior Measuring Inc. 2024. All rights reserved for Excelsior Measuring Inc.
Users shall not publish and distribute such material (in whole or in part) and/or incorporate it in other works in any form.



NORTH