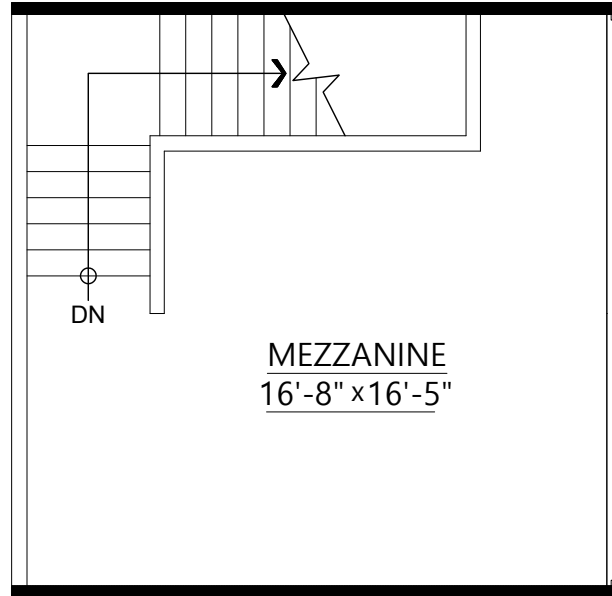




WESTROCK PROPERTY

604 929 9493

www.westrockproperty.com



2 - 2779 Lake City Way, Burnaby

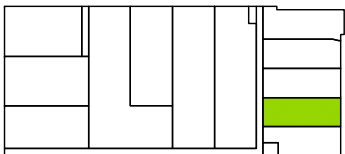
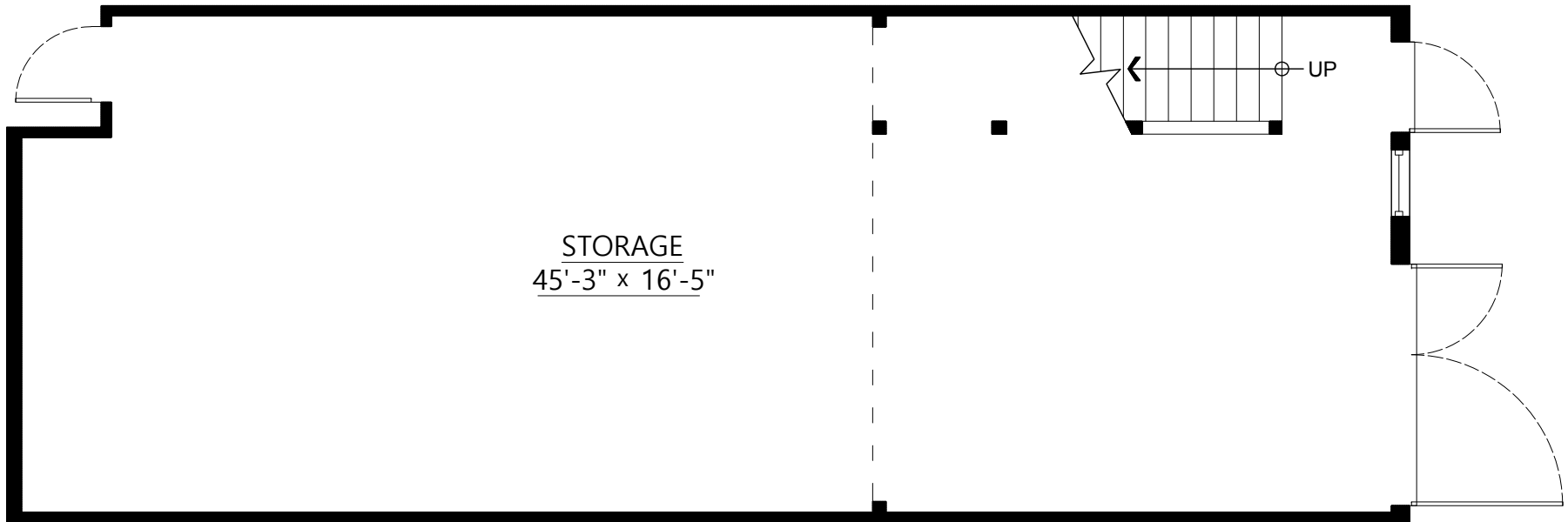
Tenant Area : 792 sq.ft.

Common Area : 59 sq.ft.

Total Tenant + Common : 851 sq.ft.

Mezzanine : 303 sq.ft.

Total : 1,154 sq.ft.



This floor plan is not intended for architectural/construction use.