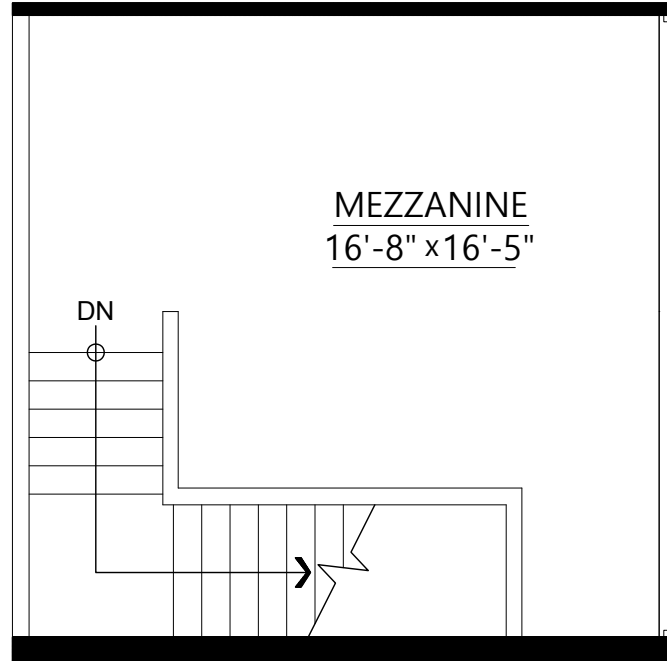




WESTROCK PROPERTY

604 929 9493

www.westrockproperty.com



1 - 2779 Lake City Way, Burnaby

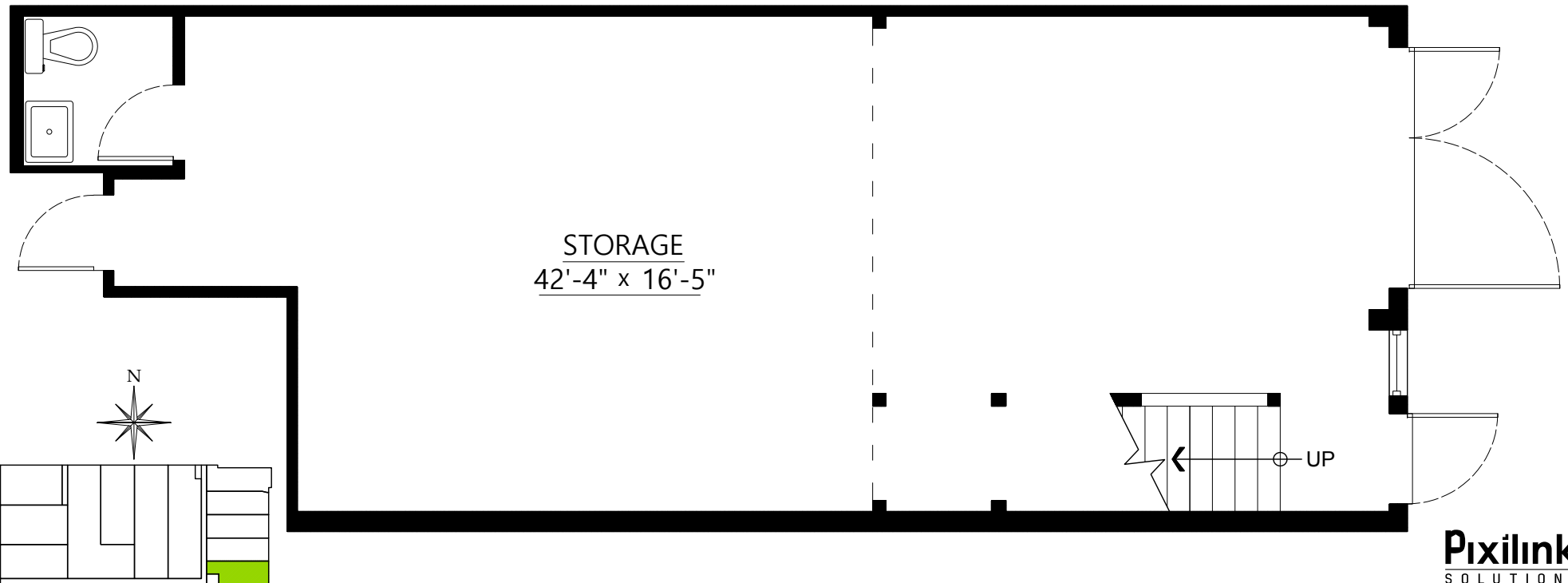
Tenant Area : 736 sq.ft.

Common Area : 55 sq.ft.

Total Tenant + Common : 791 sq.ft.

Mezzanine : 309 sq.ft.

Total : 1,100 sq.ft.



This floor plan is not intended for architectural/construction use.